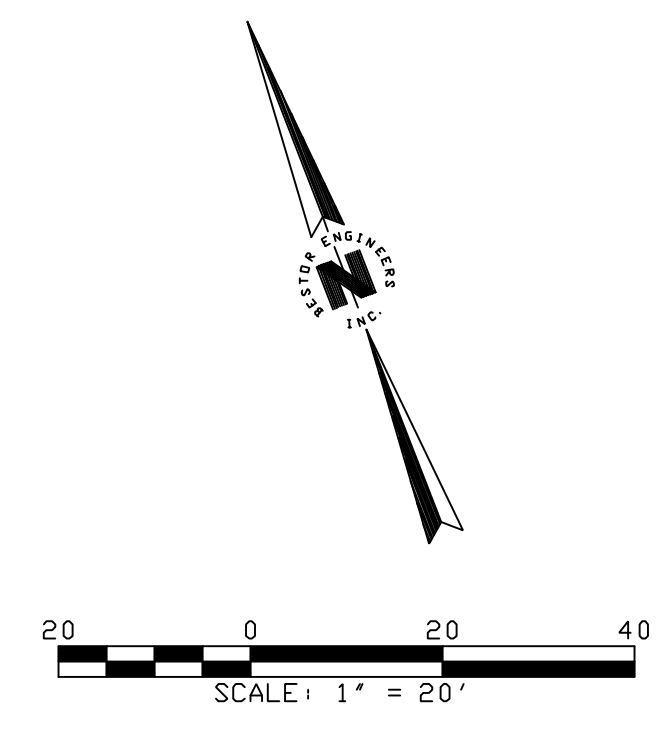
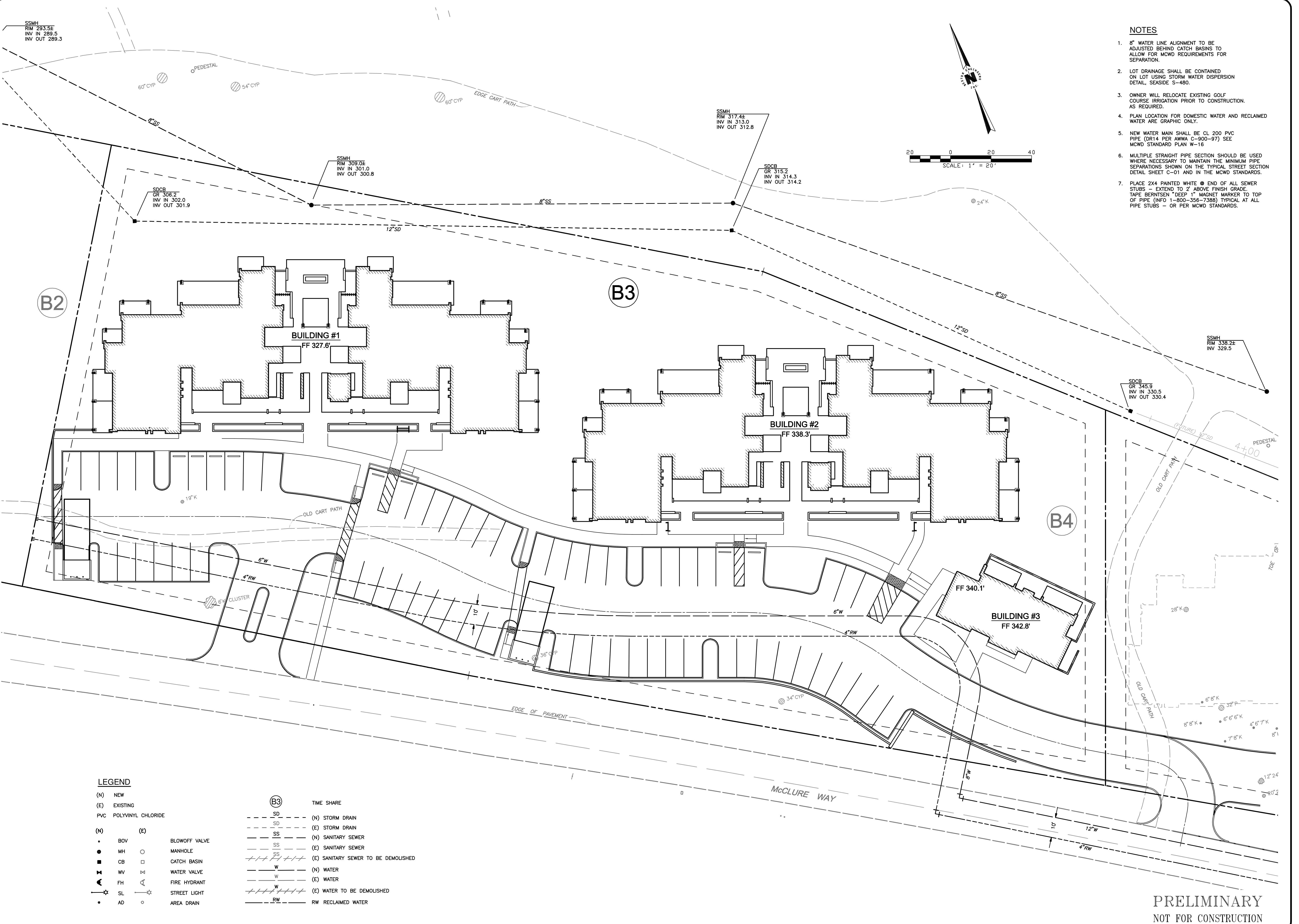


L:\5991\599100\Drawings\Master Utilities\Plansheets\C-03.DWG - sibojaf - OCT 03, 2017 - 15:03:27

THE USE OF THESE PLANS AND SPECIFICATIONS SHALL BE RESTRICTED TO THE ORIGINAL SITE FOR WHICH THEY WERE PREPARED AND PUBLICATION THEREOF IS EXPRESSLY LIMITED TO SUCH USE. REPRODUCTION, OR PUBLICATION BY ANY METHOD, IN WHOLE OR IN PART, IS PROHIBITED. TITLE TO THE PLANS AND SPECIFICATIONS REMAINS IN THE ENGINEER WITHOUT PREJUDICE. VISUAL CONTACT WITH THESE PLANS AND SPECIFICATIONS SHALL CONSTITUTE PRIMA FACIE EVIDENCE OF THE ACCEPTANCE OF THESE RESTRICTIONS.



- NOTES**
- 8" WATER LINE ALIGNMENT TO BE ADJUSTED BEHIND CATCH BASINS FOR ALLOW FOR MCWD REQUIREMENTS FOR SEPARATION.
 - LOT DRAINAGE SHALL BE CONTAINED ON LOT USING STORM WATER DISPERSION DETAIL, SEASIDE S-480.
 - OWNER WILL RELOCATE EXISTING GOLF COURSE IRRIGATION PRIOR TO CONSTRUCTION. AS REQUIRED.
 - PLAN LOCATION FOR DOMESTIC WATER AND RECLAIMED WATER ARE GRAPHIC ONLY.
 - NEW WATER MAIN SHALL BE CL 200 PVC PIPE (DR14 PER AWWA C-900-97) SEE MCWD STANDARD PLAN W-16
 - MULTIPLE STRAIGHT PIPE SECTION SHOULD BE USED WHERE NECESSARY TO MAINTAIN THE MINIMUM PIPE SEPARATIONS SHOWN ON THE TYPICAL STREET SECTION DETAIL SHEET C-01 AND IN THE MCWD STANDARDS.
 - PLACE 2X4 PAINTED WHITE END OF ALL SEWER STUBS - EXTEND TO 2' ABOVE FINISH GRADE. TAPE BERTINSEN "DEEP 1" MAGNET MARKER TO TOP OF PIPE (INFO 1-800-356-7388) TYPICAL AT ALL PIPE STUBS - OR PER MCWD STANDARDS.

LEGEND

(N)	NEW	(B3)	TIME SHARE
(E)	EXISTING	SD	(N) STORM DRAIN
PVC	POLYVINYL CHLORIDE	SD	(E) STORM DRAIN
(N)	(E)	SS	(N) SANITARY SEWER
•	BOV	SS	(E) SANITARY SEWER
○	MH	SS	(E) SANITARY SEWER TO BE DEMOLISHED
○	CB	W	(N) WATER
□	WATER VALVE	W	(E) WATER
□	CATCH BASIN	W	(E) WATER TO BE DEMOLISHED
□	MANHOLE	W	RW RECLAIMED WATER
□	STREET LIGHT	W	
□	AREA DRAIN	W	

REVISIONS	
DESIGNED BY	
DRAWN BY	
DATE:	
ENGINEER	
RCE:	
EXP:	

BESTOR ENGINEERS, INC.
 CIVIL ENGINEERING - SURVEYING - LAND PLANNING
 9701 BLUE LARKSPUR LANE, MONTEREY, CALIFORNIA 93940

UTILITY PLAN
 SEASIDE RESORT HOTEL - STAGE 1
 CITY OF SEASIDE

PREPARED FOR: SEASIDE RESORT
 COUNTY OF MONTEREY, CALIFORNIA

SCALE:	1" = 20'
DATE:	10/17
SHEET:	C-03
WO:	5991.00

PRELIMINARY
NOT FOR CONSTRUCTION